



BIMZELX NAVIGATE™ OVERVIEW GUIDE

The opportunity to start exceptionally with BIMZELX Navigate

Help set your patients up for treatment success with onboarding resources that meet you where you are.

 **Bimzelx**[®]
(bimekizumab-bkzx)
Navigate

BIMZELXHCP.com

BIMZELX NAVIGATE™ OVERVIEW

TABLE OF CONTENTS



PROGRAM BENEFITS & OVERVIEW

BIMZELX Navigate Overview	3
The Importance of Patient Consent	3
Financial Support	4
My Navigate Portal	5
Injection Training	6
Nurse Navigators	7

FINANCIAL ACCESS & COVERAGE

Enrollment Options	9
The BIMZELX Navigate Portal	10
BIMZELX® Bridge and BIMZELX Savings	11

PROGRAM BENEFITS & OVERVIEW

This section details the benefits and support patients may experience once they have been enrolled in BIMZELX Navigate™.

BIMZELX NAVIGATE™ OVERVIEW

COMMITTED TO MEETING YOU & YOUR PATIENTS WHERE YOU ARE

BIMZELX Navigate is an end-to-end patient support program—reimagined and highly personalized—to support patients, healthcare providers (HCPs), Biologic Coordinators (BCs), and office staff alike throughout the BIMZELX® (bimekizumab-bkzx) treatment journey.

Eligible commercially insured patients whose prescription is initially denied or delayed by insurance may be eligible to receive BIMZELX at \$15 per dose for up to 2 years. After approval is obtained, if eligible for BIMZELX Savings, they'll pay only \$5 per dose.* Patients who have a completed consent form on file will be connected with a dedicated Nurse Navigator, who will provide additional support, injection training, and tools during each step of the treatment enrollment process and beyond.†

TO HELP PATIENTS GET STARTED, WE OFFER:

- **HCP choice** in onboarding: direct to preferred Specialty Pharmacy or the BIMZELX Navigate Hub
- A **dedicated Case Manager** (when working through our BIMZELX Navigate Hub) to help you with initial questions about your patient's benefits and prior authorizations
- A **BIMZELX Savings Card** to help patients with treatment costs
- **BIMZELX Bridge** to help get eligible patients on treatment right away
- **Multiple support tools** to help ensure patients receive the assistance they need
- **Nurse Navigators**—registered nurses who serve as a compassionate, single point of contact and can connect patients with everything BIMZELX Navigate has to offer
- A **BIMZELX Navigate portal** that will provide BCs with an online hub that offers a variety of capabilities to get patients on BIMZELX quickly and easily

THE IMPORTANCE OF PATIENT CONSENT

Getting your patient's consent is critical for onboarding them fully into BIMZELX Navigate. Therefore, it's important for your office to make sure that the patient has given their consent via one of three methods:



The Patient
Enrollment Form



Patient self-enrollment
on BIMZELX.com



Text message (sent to
patients who are registered
via the BIMZELX Navigate portal)

*For eligible commercially insured patients only. Eligible patients may pay as little as \$15 per dose of BIMZELX® for up to two years or until the patient's commercial insurance plan approves coverage, whichever comes first. Eligible patients may then pay \$5 per dose. View complete eligibility requirements and terms at BIMZELXHCP.com.
†Nurse Navigators do not provide medical advice and will refer patients to their healthcare professional for any treatment-related questions.

FINANCIAL SUPPORT

COVERED FROM THE START

When it comes to starting a new treatment, cost shouldn't be a major deciding factor. To help with the financial side of treatment, BIMZELX Navigate™ offers savings programs to help eligible commercially insured patients start their treatment without worrying about cost and coverage.

BIMZELX® Bridge*

- **\$15 per dose**
- **Covers delays or denials in insurance coverage**
- **Coverage for up to 2 years or until the patient's commercial insurance plan approves coverage***
- **First fill available without prior authorization**

Once a patient's insurance approves coverage for BIMZELX® (bimekizumab-bkzx), they can transition to the BIMZELX Savings program.



BIMZELX Savings

\$5 copay per dose*



*For eligible commercially insured patients only. Eligible patients may pay as little as \$15 per dose of BIMZELX® for up to two years or until the patient's commercial insurance plan approves coverage, whichever comes first. Eligible patients may then pay \$5 per dose. View complete eligibility requirements and terms at BIMZELXHCP.com.

For further details about our assistance programs, see the Access & Coverage Section.

MY NAVIGATE PORTAL

ONLINE RESOURCES FOR PATIENTS



BIMZELX.COM/NAVIGATE-SIGN-UP

When patients are enrolled in BIMZELX Navigate™, they are able to gain access to their personalized My Navigate portal.

PATIENTS CAN ENROLL IN ONE OF THREE WAYS:

- 1 Sign up online by visiting BIMZELX.com/Navigate-Sign-Up
- 2 Contact a BIMZELX® Nurse Navigator at 1-833-931-NURS (1-833-931-6877)
- 3 Use the QR code that can be found on certain onboarding materials:
 - Patient Welcome Kit
 - Patient Brochure or Patient Expectations Card (both of which are provided in their Patient Welcome Kit).

Once registered, patients can use their computer or mobile device to easily access personalized treatment information and download support materials from wherever they are.

PATIENTS WILL GAIN ACCESS TO:

-  Downloadable BIMZELX Savings Card that can be used for BIMZELX Bridge or BIMZELX Savings. No more waiting for it to arrive in the mail!
-  Contact information for their dedicated Nurse Navigator*
-  Injection training resources to help guide patient administration at home
-  Medication reminders and free sharps disposal containers

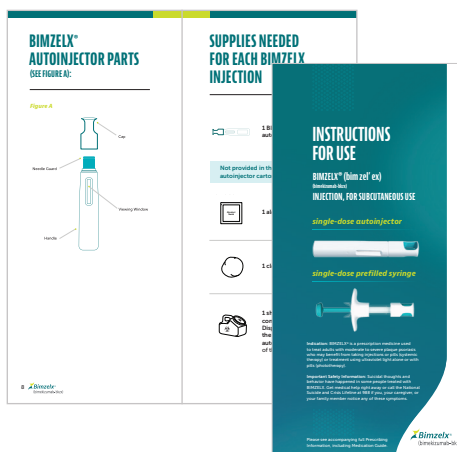
*Nurse Navigators do not provide medical advice and will refer patients to their healthcare professional for any treatment-related questions.

INJECTION TRAINING

PREPARING PATIENTS FOR SELF-INJECTING AT HOME

Patients will receive their initial training at your office in order to learn how to self-administer BIMZELX® (bimekizumab-bkzx) at home.

Once properly trained, patients can reference the “Instructions for Use” booklet for additional injection guidance, which is available inside their BIMZELX Patient Welcome Kit, at [BIMZELX.com](https://www.bimzelx.com), or through the QR Code below. Patients can also view injection training videos using the same QR Code.



Injection Training Video

Instructions for Use Booklet

NURSE NAVIGATORS

A COMPASSIONATE, SINGLE POINT OF CONTACT



At enrollment, each patient is paired with a dedicated Nurse Navigator—a registered nurse that they can rely on to connect them with everything BIMZELX Navigate™ has to offer,* including:

- **Guiding patients through the onboarding process**
- **Conducting a 3-way initial phone call between patient, Specialty Pharmacy, and Nurse Navigator**
- **Providing injection training**
- **Helping establish treatment goals and expectations**
- **Performing goal check-ins and well-being checks**

*Nurse Navigators do not provide medical advice and will refer patients to their healthcare professional for any treatment-related questions.

FINANCIAL ACCESS & COVERAGE

This section provides a more detailed breakdown of the enrollment and financial assistance options we offer to get patients started on BIMZELX® (bimekizumab-bkzx).

ENROLLMENT OPTIONS

FINANCIAL ACCESS & COVERAGE

BIMZELX Navigate™ provides multiple enrollment options that give your office the flexibility to use your preferred workflow to get patients started on treatment.

You are in control of how to enroll your patients, whether that's by fax, digitally, or e-prescribing directly to the BIMZELX Navigate Hub or your Specialty Pharmacy (SP) of choice.

YOU CAN CHOOSE FROM THREE PATHWAYS WHEN PRESCRIBING BIMZELX® (bimekizumab-bkzx).

- 1** Direct to BIMZELX Navigate Hub
- 2** Direct to Bridge-dispensing SP*
- 3** Direct to non-Bridge-dispensing SP

Prescribers should onboard a patient via the BIMZELX Navigate Hub OR a SP (not both)

Refer to the table below to see which BIMZELX Navigate services are available through each enrollment pathway.

BIMZELX ENROLLMENT OPTIONS	BIMZELX SAVINGS <small>Copay options for eligible commercially insured patients</small>	BIMZELX BRIDGE <small>Access for eligible commercially insured patients when insurance is delayed or denied</small>	DEDICATED CASE MANAGER <small>Supports HCP office with benefits verification and prior authorization assistance for HUB prescriptions</small>	AUTO-ENROLLED WITH NURSE NAVIGATOR <small>Helping patients with insurance status, shipment updates, injection training, and goal setting</small>
BIMZELX HUB OPTION	✓	✓	✓	✓
BRIDGE-DISPENSING SP	✓	✓	<small>Once commercially approved, Case Manager will discontinue Bridge and allow pharmacy to fill</small>	
NON-BRIDGE-DISPENSING SP	✓	<small>When prescription is transferred to the BIMZELX Navigate Hub or a Bridge-dispensing SP, patient may be eligible for BIMZELX Bridge</small>		

In order to access additional patient tools, patients will need to sign up for the My Navigate patient portal. Patients can use the QR code on their onboarding materials or go to BIMZELX.com/Navigate-Sign-Up to sign up.

*For important contacts and information for our network of SPs, see the **Specialty Pharmacy Network Overview document** in the **Important Forms and Resources** section of the toolkit.

IMPORTANT CONTACTS:

Having issues enrolling patients via the SP network?
Contact your Field Access Specialist.

Need some assistance with enrolling a patient via the BIMZELX Navigate Hub?
Contact your Case Manager.

THE BIMZELX NAVIGATE™ PORTAL

RESOURCES AT YOUR FINGERTIPS



The BIMZELX Navigate portal provides you with an online hub that offers a wide array of capabilities to get your patients on BIMZELX® (bimekizumab-bkzx) quickly and easily, such as:

- **The ability to sign your office's Business Associate Agreement (BAA)**
- **Performing benefits verification (BV)**

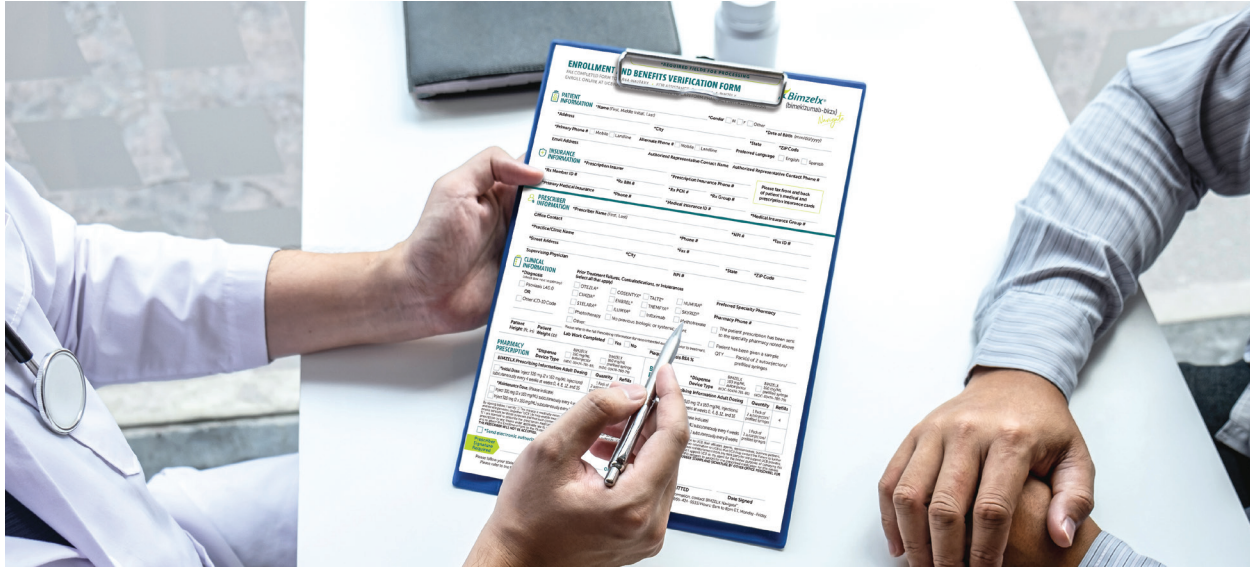
And once patients are enrolled in BIMZELX Navigate, you will gain access to features like:

- **Monitoring BV and fulfillment statuses for patients**
- **Setting up patients for BIMZELX financial services**
- **Viewing up-to-date prescription statuses for patients on BIMZELX Bridge**
- **Utilizing the Help Center chat to answer any questions or troubleshoot any issues in real time**
 - A messaging center is also available for when the team is occupied helping other Biologic Coordinators (BCs) or the office is closed

TO ACCESS THE BIMZELX NAVIGATE PORTAL:

- 1 Visit UCBNavigate.com.
- 2 Register with your name and workplace email address.
- 3 Be on the lookout for a confirmation email to finish setting up your account.
- 4 Using the link in the confirmation email, enter all relevant information to complete your registration.

FINANCIAL SAVINGS & SUPPORT



BIMZELX Navigate™ offers two affordable options for your eligible commercially insured patients: BIMZELX Bridge and BIMZELX Savings. This simplified approach to financial support can help make getting patients on treatment faster and easier.

STREAMLINED PRODUCT ACCESS WITH BIMZELX BRIDGE

We'll ship BIMZELX (bimekizumab-bkzx) to eligible patients with commercial coverage for \$15 per dose for up to 2 years if coverage is delayed or denied by their insurance.* And, with no prior authorization (PA) needed before their first fill, patients can start their first dose immediately.

After eligible patients are enrolled in **BIMZELX Bridge**, a submission of a PA is required prior to shipment of the second dose.

The Specialty Pharmacy or BIMZELX Navigate Hub will continue to follow up on the patient's PA, which must be submitted before the patient's second Bridge fill. If the PA is denied, the patient will continue on BIMZELX Bridge, and an appeal must be submitted within the first 60 days of the PA denial. Also, a PA must be submitted every 6 months thereafter or documentation as may otherwise be required by the payer.

*For eligible commercially insured patients only. Eligible patients who have a delay or denial of coverage may pay as little as \$15 per dose of BIMZELX® for up to 2 years or until the patient's commercial insurance plan approves coverage, whichever comes first. Please see full eligibility and terms at BIMZELXHCP.com.

[CONTINUED ON NEXT PAGE >](#)

FINANCIAL SAVINGS & SUPPORT

ONCE INSURANCE COVERAGE IS APPROVED

Eligible patients will transition immediately to **BIMZELX Savings** and can stay on treatment for only \$5 per dose.[†]

[†]Eligible commercially insured patients may pay \$5 per dose. Please see full eligibility requirements and terms at BIMZELXHCP.com.

FOR UNDERINSURED OR UNINSURED PATIENTS:

UCB is committed to ensuring patients who need our medications can access them. For patients who don't qualify for BIMZELX Bridge or BIMZELX Savings, other financial assistance may be available through UCB's Patient Assistance Program. Patients can go to askUCBCares.com to learn more.

REMEMBER, PATIENT CONSENT IS CRUCIAL

Getting your patient's consent is critical for onboarding them fully into BIMZELX Navigate™. Therefore, it's important for your office to make sure that the patient has given their consent via one of three methods:



The Patient Enrollment Form



Patient self-enrollment on BIMZELX.com



Text message (sent to patients who are registered via the BIMZELX Navigate portal)

BIMZELXHCP.com

 **Bimzelx**[®]
(bimekizumab-bkzx)
Navigate



Bimzelx[®]
(bimekizumab-bkzx)
Navigate



Inspired by **patients.**
Driven by **science.**

BIMZELX[®] is a registered trademark,
and BIMZELX Navigate[™] is a trademark,
of the UCB Group of Companies.

All other trademarks and registered trademarks
are the property of their respective holders.
©2023 UCB, Inc., Smyrna, GA 30080.
All rights reserved. Printed in the USA.
US-P-BK-PSO-2200171